

TIRE INSPECTION

VISION.SPECTOR TIRE EOL & DOT



www.mabri.vision

Philipsstraße 8
52068 Aachen | Germany
+49 241 5652 7930
info@mabri.vision


MABRI.VISION
BEYOND MATTERS

www.mabri.vision

VISION.SPECTOR TIRE EOL & DOT

Your solution for efficient wheel and tire testing

Discover the future of automated quality control for complete wheels with VISION.SPECTOR TIRE EOL & DOT.

Our testing systems offer flexible application possibilities – perfectly suited for use at the beginning of the assembly line as well as for final end-of-line quality inspection.

Equipped with the latest Machine Vision technology, our systems guarantee accurate inspection of wheel diameter, tire geometry, rim design, valves, and match points. Additionally, the capture of DOT and DOM codes enables unparalleled quality assurance in your production.

Enhance the quality standards and efficiency of your production processes with customized solutions from MABRI.VISION.

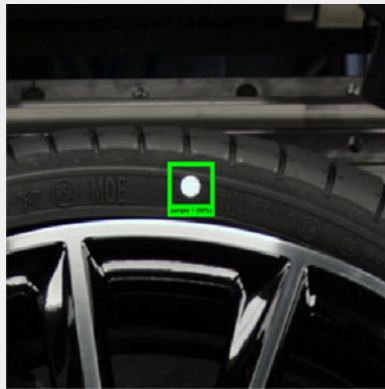


RIM DESIGN



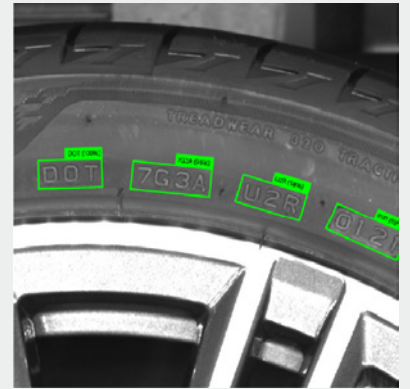
Detection of correct rim design: This test ensures that each wheel is equipped with the specified rim design.

MATCH POINT

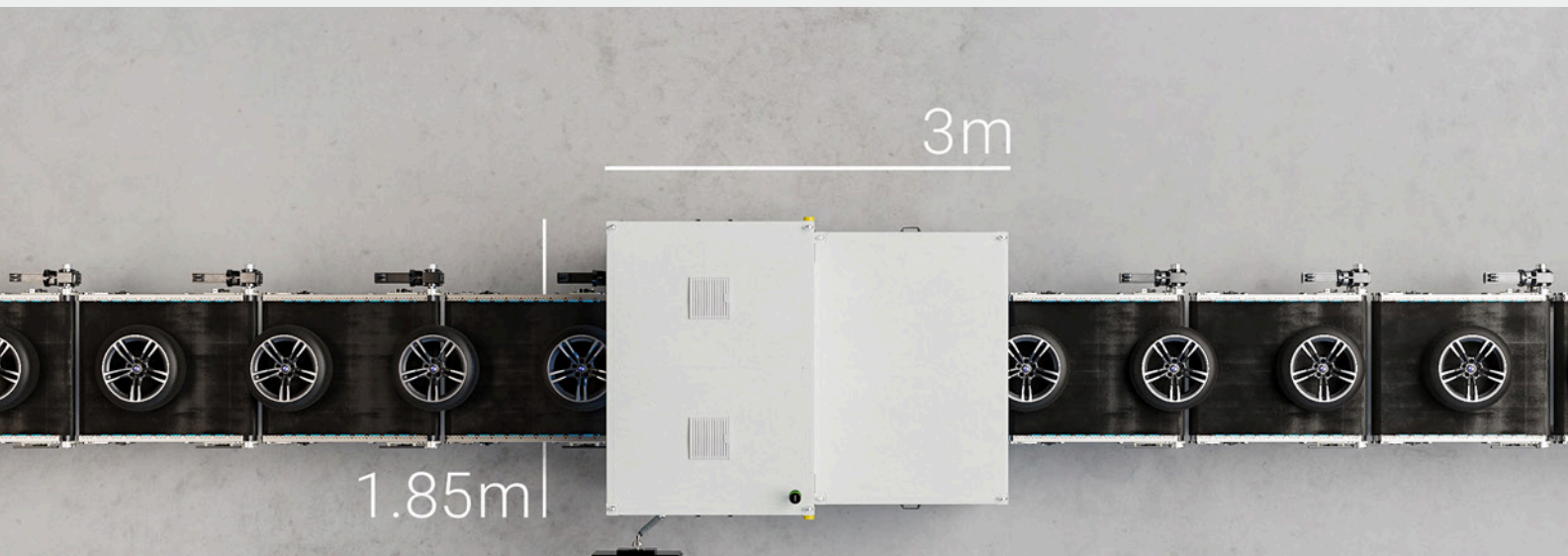


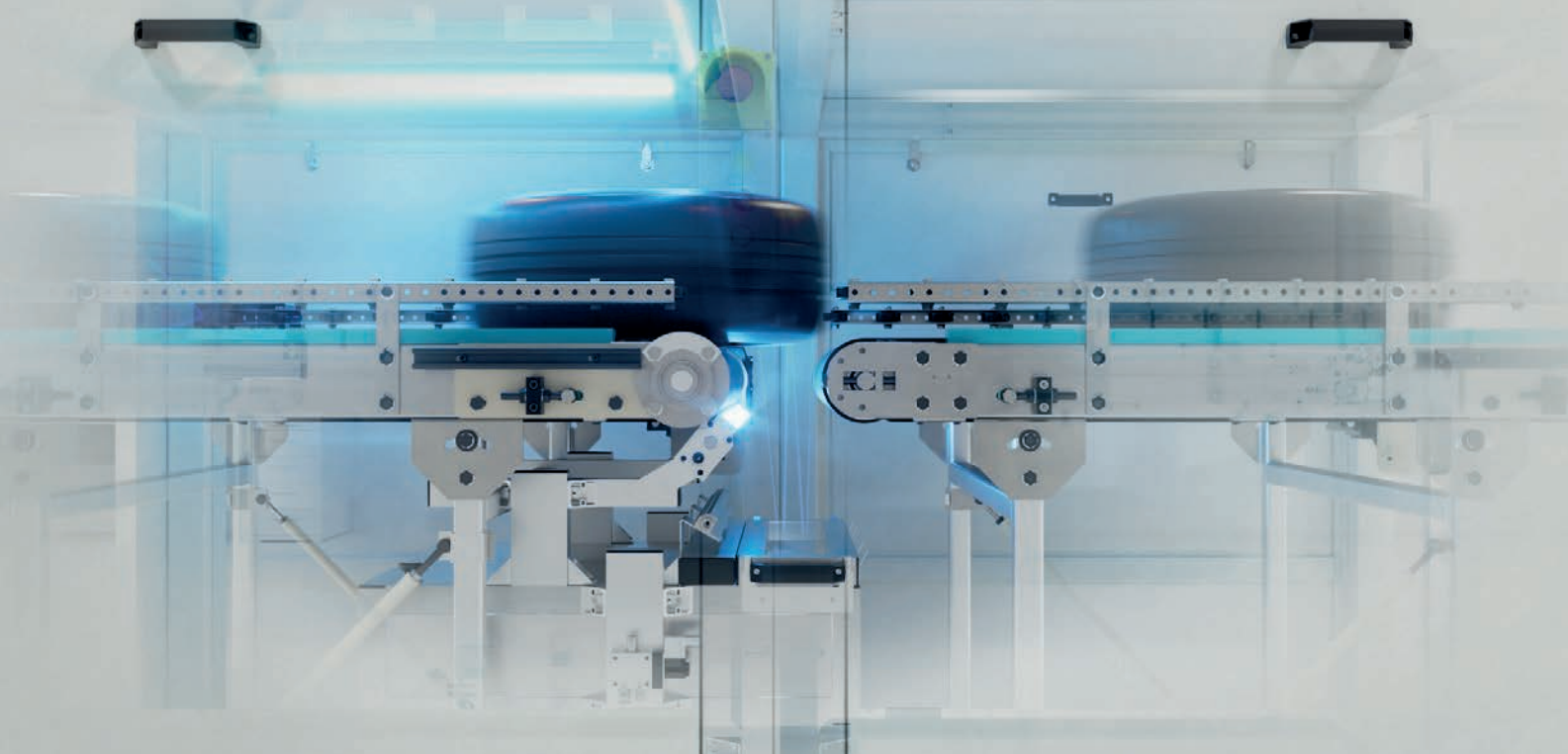
Detection of the position of colored match points on tires and rims: This feature detects the exact positioning of colored match points on the rim and tire, which is crucial for the correct assembly and balancing of the wheels.

DOT



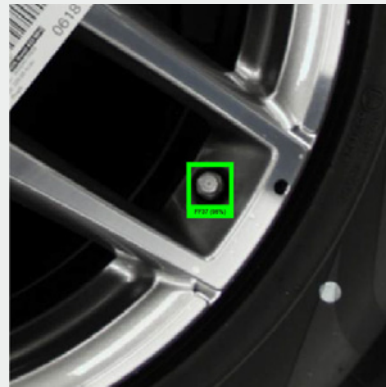
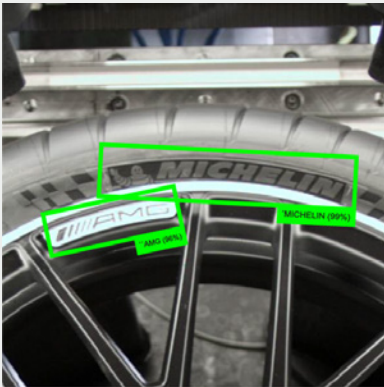
AI-based detection of DOT & DOM on both sides: By using artificial intelligence, DOT/DOM codes on the outer and inner sides of the tire are precisely identified, ensuring complete traceability and compliance.





SYMBOLS

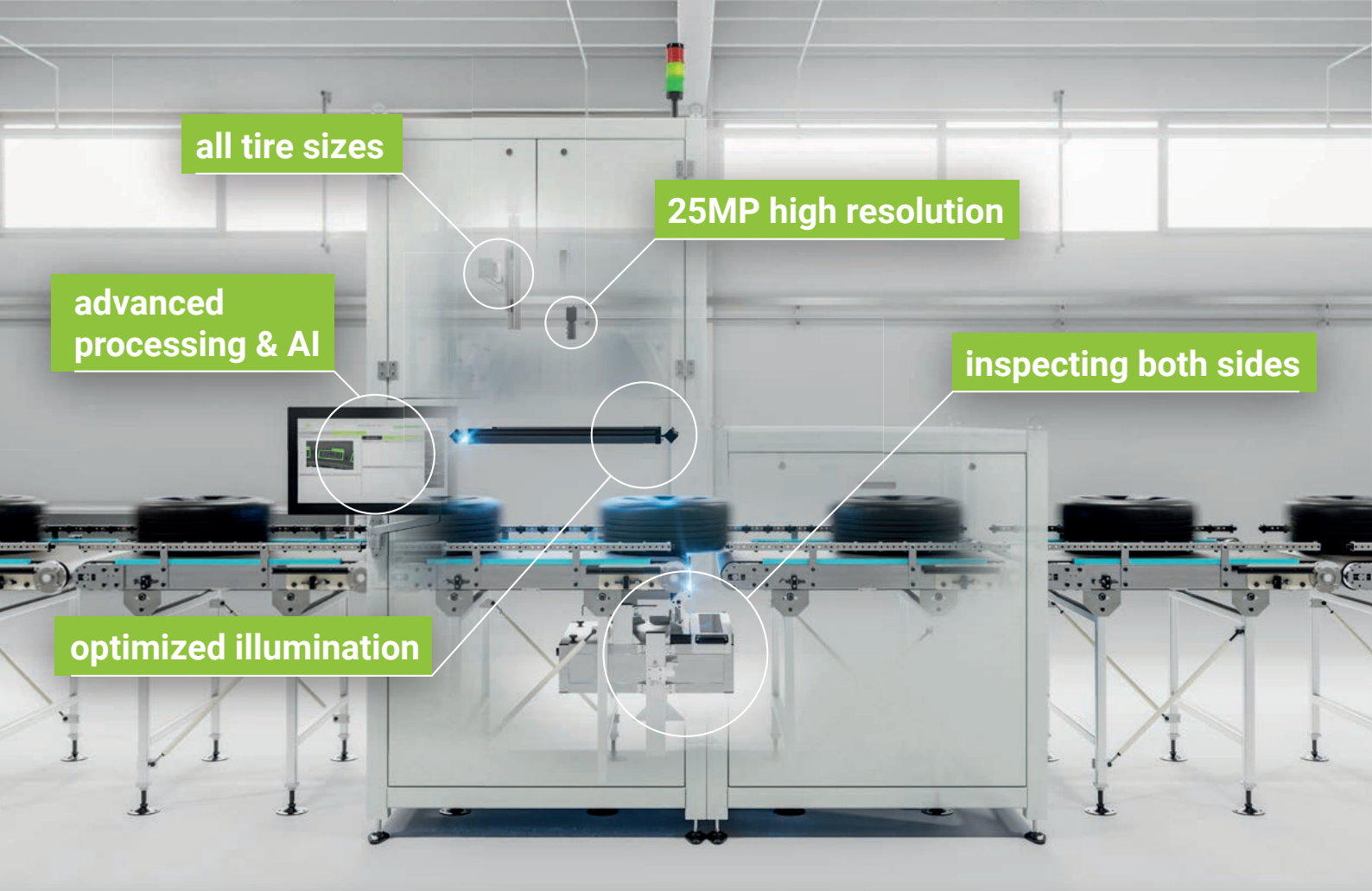
VALVES



Detection of symbols on the tires: This test identifies specific symbols and markings on the tire that are important for safety regulations, tire specifications, or brand identification.

Detection of valve position and presence of valve cap: This feature checks whether the correct valve cap is mounted. Additionally, it simultaneously captures the position of the valve.





all tire sizes

25MP high resolution

advanced processing & AI

inspecting both sides

optimized illumination

OUR INDUSTRIAL GRADE SOFTWARE

Efficiency Meets Precision

The Machine Vision software of VISION.SPECTOR TIRE EOL & DOT is a sophisticated solution for the automated testing of wheels and tires. With its ability to precisely identify rim designs, match points, as well as DOT and DOM codes, it combines efficiency with accuracy. The intuitive user interface on a large screen allows for easy operation and quick adaptation to various testing tasks, while the integrated data management enhances traceability and quality control. Optimize your production line with software that stands for precision in end-of-line testing.



www.mabri.vision

Philipsstraße 8
52068 Aachen | Germany
+49 241 5652 7930
info@mabri.vision



www.mabri.vision